

# **CENTRALE Lustica Bay Town Center Residence Centrale Apartment 6312 Urban**



**Objektnummer: 2024-00363**

**Eine Immobilie von SAQURA Immobilien GmbH**

## Zahlen, Daten, Fakten

<b>Art:</b>	Wohnung - Etage
<b>Land:</b>	Montenegro
<b>PLZ/Ort:</b>	Luštica Bay
<b>Wohnfläche:</b>	57,67 m <sup>2</sup>
<b>Nutzfläche:</b>	64,52 m <sup>2</sup>
<b>Kaufpreis:</b>	351.500,00 €

## Ihr Ansprechpartner

### **SAQURA Team**

SAQURA Immobilien GmbH  
Riesgasse 3/14  
1030 Wien

T +43 6677639102 436769096949

Gerne stehe ich Ihnen für weitere Informationen oder einen Besichtigungstermin zur Verfügung.







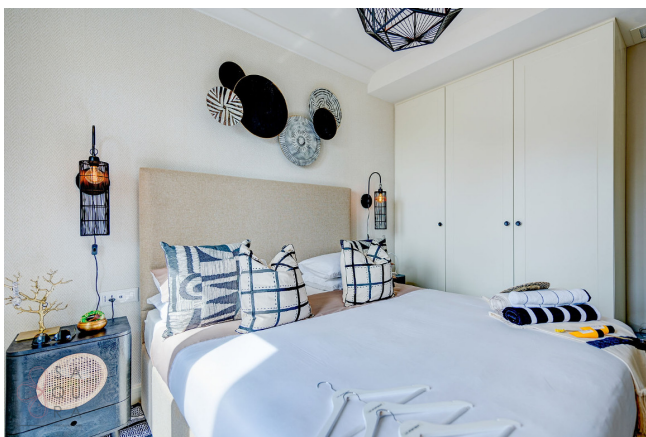


































Residence 6-3 | Ground Floor

**6-5-12 | 1 bedroom**

Internal Area 57.67 m<sup>2</sup>

Terrace 8.66 m<sup>2</sup>

**Total 66.33 m<sup>2</sup>**

Terrace 8.66 m<sup>2</sup>

**Property Features**

- Open plan living and dining areas
- Spacious balconies and terraces
- Contemporary fixtures and spacious layouts
- Internal storage spaces
- Fully equipped kitchen
- All fixed furniture included
- Video enabled automated entry system
- Underfloor heating in bedrooms
- Wind free air conditioning system
- Floor to ceiling windows

Central Lockable

## Objektbeschreibung

CENTRALE Lustica Bay Town Center Residence Centrale Apartment 6312 Centrale Luštica Bay's town centre Centrale is set to become the urban fabric and the beating heart of Luštica Bay. With residential buildings already springing up, alongside a school, bank, a fire service and more in the works, it is just the right place for families and professionals looking for a perfect second or vacation home. It is complimented by entirely modern infrastructure and intelligent design that is connected to the natural environment. Combining residential and commercial zones with a range of public spaces, the neighbourhood is designed to respond to the landscape's features to make the most of outdoor living and vibrant community life. Laced with atmospheric streets, and with a Piazza, a showpiece square bursting with shops, cafes, galleries, and restaurants, Centrale is designed to offer a lively, non-stop energy every day, all-year round. Property Features: Open plan living and dining areas Spacious balconies and terraces Contemporary fixtures and spacious layouts Internal storage spaces Fully equipped kitchen All fitted furniture included 24h customer service and security Beach access Lustica Bay Town Center 1 bedroom apartment 6312 Urban Apartment area: 57.67m<sup>2</sup> Terrace area: 6.85m<sup>2</sup> Total area: 64.25m<sup>2</sup> Available apartments two more -1 bedroom from 56.70m<sup>2</sup> to 57.67m<sup>2</sup> and price from 351 500 € to 383 000 €. Available apartments two-2 bedroom from 78.24m<sup>2</sup> and price from 445 000€ to 465 000€ Available apartments nine-3 bedroom from 94.14 m<sup>2</sup> to 177.89m<sup>2</sup> and price from 538 000 € to 1 492 500 € Payment Plan 1 – Reservation Deposit Reservation Deposit of €2,000 to €5,000 (depending on the size of unit) 2 – 25% Payment 25% payment on signature of Sales & Purchase Agreement 3 – Instalments 75% in equal quarterly instalments over 5 years