

BW KING'S PARK Unit No 004



Objektnummer: 2024-00372

Eine Immobilie von SAQURA Immobilien GmbH

Zahlen, Daten, Fakten

Art:	Wohnung - Etage
Land:	Serbien
PLZ/Ort:	Belgrade Waterfront
Wohnfläche:	49,91 m ²
Nutzfläche:	63,79 m ²
Zimmer:	2
Bäder:	1
Terrassen:	1
Kaufpreis:	307.888,00 €

Ihr Ansprechpartner

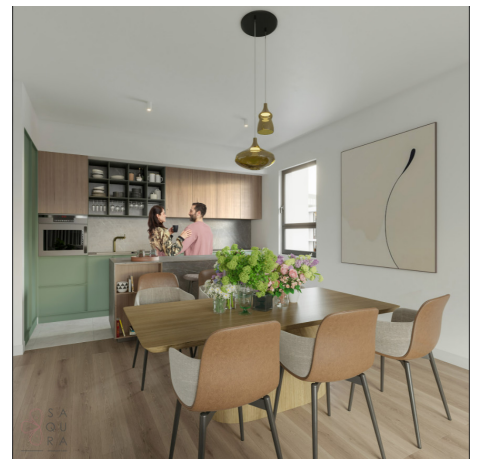
SAQURA Team

SAQURA Immobilien GmbH
Riesgasse 3/14
1030 Wien

T +43 6677639102 436769096949

Gerne stehe ich Ihnen für weitere Informationen oder einen Besichtigungstermin zur Verfügung.









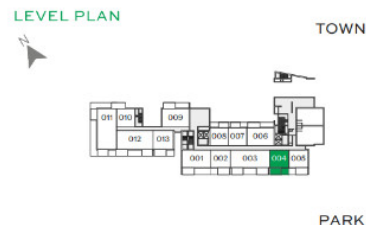
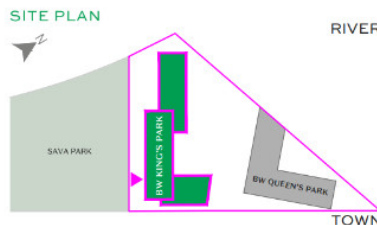
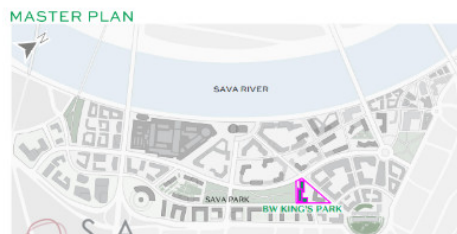
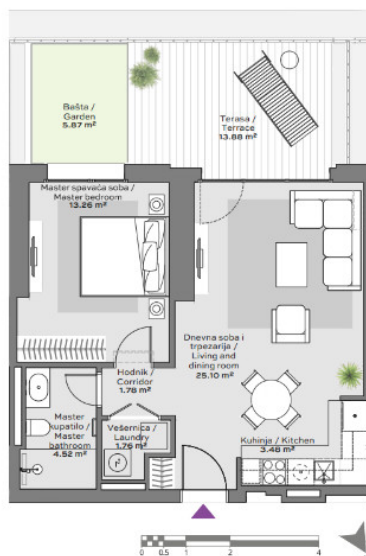
BW KING'S PARK

RESIDENCES

One Bedroom

Stan Br. Unit No. 004

	DIMENZIE DIMENSIONS
Površina Stana Apartment Area	49.91 m ²
Površina Terase Terrace Area	13.88 m ²
Ukupna Površina Total Area	63.79 m ²



Napomena: Svi materijali, dimenzije i crteži su okvirni. Kalkulacija površina unutrašnjeg i spoljašnjeg prostora urađena je u skladu sa važećim standardom (SRPS U.C2.100:2002) i predstavlja neto površinu stambene jedinice.
Disclaimer: All materials, dimensions and drawings are approximate. Calculation of internal and external area is fully compliant with local standards (SRPS U.C2.100:2002) and as such it represents the net area of the unit.

Oznaka stana / Apartment code: KIN-004

Objektbeschreibung

BW KING'S PARK A royal view of life BW King's Park Residences is your entrance into the new kingdom of life. Positioned in the third row from the Sava River, this modern multi-storey building has a direct connection with the Sava Park, providing a unique ambience for the residents in the urban living conditions. The building is surrounded with inspiring greenery and exclusive content that guarantee exceptional advantages for the lifestyle of all generations. Young couples and singles will find the best restaurants, cafes and shops. The proximity of school, kindergarten, playground and the direct access to the park will welcome families with children, while all generations of residents will have an equal opportunity to enjoy landscaped walking and relaxation areas along the Sava Promenada or in nearby parks. BW King's Park Residences is a 15-storey building with 223 residential units of various sizes, designed to meet all the criteria of exclusiveness and comfort. Whether you are in pursuit of investment or a new living space, you will find an exceptional choice from studios to four-bedroom apartments of the highest quality. BW King's Park Residences is designed as a residential building with retail located on the ground floor facing the street, with two levels of underground garage with 257 parking spaces for residents. Couples with children will find a safe and fulfilling environment. Direct access to Sava Park will provide you with plenty of opportunities for family relaxation, while the kindergarten and school are situated in close proximity, in the adjacent building.

1 bedroom apartment 004 Apartment area: 49.91 m² Terrace area: 13.88 m² Total area: 63.79m² We have two more 1 bedroom , one 2 bedroom, six 3 bedroom, and five 4 bedroom apartmnet available.